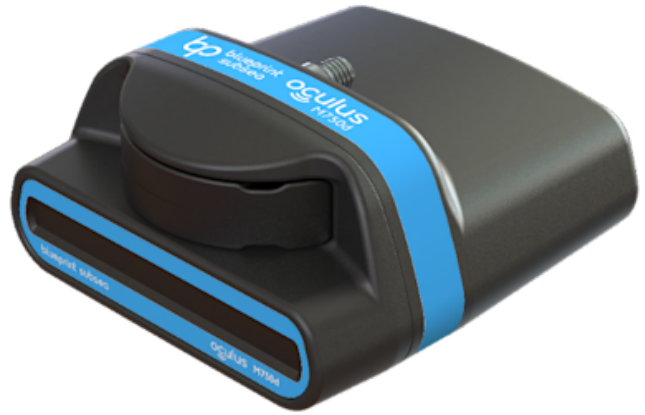


# OCULUS M1200D DUAL-FREQUENCY MULTIBEAM SONAR

SKU: BPS-OCU-M1200D

The benchmark in multibeam imaging sonars. The Oculus M-Series offers single and dual-frequency models, unparalleled image quality in a compact, rugged form factor, and a depth rating of 500 m.

**Supplier:** Blueprint Subsea



## TECHNICAL SPECIFICATIONS

### Mechanical

<b>Dimensions</b>	122 mm (L) x 122 mm (W) x 62 mm (H)
<b>Construction</b>	Anodised Aluminium
<b>Weight</b>	980 g (Air), 360 g (Water)
<b>Depth Rating</b>	500 m
<b>Temp. Range (operating)</b>	-5°C up to +35°C
<b>Temp. Range (Storage)</b>	-20°C up to +50°C

### Performance

<b>Operating Frequency</b>	1.2 MHz / 2.1 MHz
<b>Range (maximum)</b>	40 m / 10 m
<b>Range (minimum)</b>	0.1 m
<b>Range Resolution</b>	2.5 mm / 2.5 mm
<b>Update Rate (maximum)</b>	40 Hz
<b>Horizontal Aperture</b>	130° / 60°

<b>Vertical Aperture</b>	20° / 12°
<b>Number of Beams (maximum)</b>	512
<b>Angular Resolution</b>	0.6° / 0.4°
<b>Beam Separation</b>	0.25° / 0.16°

### ***Electrical***

<b>Connector</b>	Impulse IE55 Series, 6-way
<b>Communications</b>	4-wire 100-BaseT Ethernet 2-wire DSL extender module
<b>Supply Voltage</b>	12 V to 32 V DC non-isolated
<b>Power Consumption</b>	10 W to 35 W (model and range dependent)
<b>Integrated Sensor</b>	Water pressure and temperature (for Velocity-of-Sound calculations)